



॥ श्री गणेशाय नमः ॥

Mob.: 9930381028
8079008967

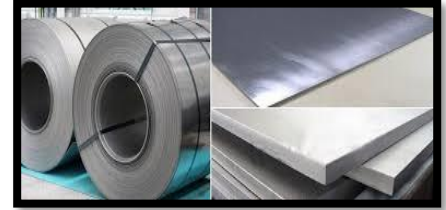
MARK STEEL INDIA

Stockist & Suppliers of : Ferrous & Non-Ferrous Metals, S.S. 304, 304L, 316, 316L, 310, 410, 430, Stainless Steel Pipe, Sheet, Plate, Coil, Round, Pipe, Tube, Circle, Hex, Square Wire, S.S. Pipe Fitting & All Types of Industrial Raw Material

01, Plot-182/184, 10, Saifee House, Trimbak Parshuram Street, 6th Kumbharwada, Mumbai-400004.
E-mail : marksteelind@hotmail.com

1) STAINLESS STEEL SHEET / PLATE / COIL / SHIMS / SLITTINGS

- Grade :- 202 / 304 / 304L / 316 / 316L / 310 / 310S / 309 / 410 / 420 Etc.
- Thickness :- 0.03mm Thk To 100mm Thk
- Finish :- Mirror / MAT - PVC / 2B / CR / HR
- Brand :- Jindal / Imported



2) STAINLESS STEEL RAILLING PIPES / TUBES / SLOTTED / SQUARE

- Grade :- 202 / 304 / 304L / 316 / 316L
- Size :- ½" To 10"
- Thickness :- 0.5mm Thk To 5mm Thk
- Finish :- CR / Matt / Mirror / Polish



3) STAINLESS STEEL SEAMLESS & WELDED PIPES

- Grade :- 202 / 304 / 304L / 316 / 316L / 310 / 310S / 321 / 317L / 347
- Size :- ½" NB To 24" NB & ½" OD To 12" OD
- Sch :- Sch 10 / Sch 20 / Sch 40 / Sch 80 / Sch 120 / Sch 160 / Sch XXS



4) STAINLESS STEEL BUTT-WELD FITTINGS

- From :- Elbow, Equal Tee, Un-Equal Tee, Con-Reducer, Enc Reducer, Hex Nipple, Barrel Nipple
- Grade :- 304 / 304L / 316 / 316L / 310 / 310S / 321 / 317L
- Size :- ½" NB To 24" NB & ½" OD To 12" OD
- Sch :- Sch 10 / Sch 20 / Sch 40 / Sch 80 / Sch 120 / Sch 160 / Sch XXs



5) STAINLESS STEEL SOCKET WELD FITTING

- From :- Elbow, Equal Tee, Un-Equal Tee, Con-Reducer, Enc Reducer, Hex Nipple, Barrel Nipple
- Grade :- 304 / 304L / 316 / 316L / 310 / 310S / 321 / 317L
- Size :- ½" NB To 24" NB & ½" OD To 12" OD
- Class :- 3000# / 6000# / 9000#



6) STAINLESS STEEL WIRE / ROD / WIRE COIL / ROUND BAR / SQUARE / HEX / RECTANGLE

- Grade :- 202 / 304 / 304L / 316 / 316L / 310 / 410 / 420 / 409
- Size :- 0.4mm Dia To 400mm Dia
- Finish :- Black / Bright / Export Bright
- Type :- Soft / Quarter Hard / Half Hard / Full Hard



7) STAINLESS STEEL FLANGES

- Grade :- 202 / 304 / 304L / 316 / 316L / 310 / 410 / 420 / 409
- Type :- Slip-On R/F, Slip-On F/F, Lap Joint, Weld Neck, Socket Weld, Blind
- Size :- ½” To 24”
- Table :- “D”, “E”, “F”, “H”
- Class :- 150#, 300#, 600#, 900# Etc
- Thickness :- As per Standard / Requirement



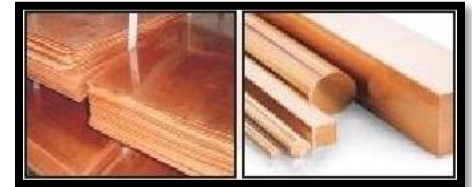
8) BRASS & COPPER

- From :- Pipes, Tubes, Coil, Sheet, Plate, Shims, Round Bar & Flat Bar
- Size :- 8mm To 8” OD (For Pipes & Tube), ¼ To 2” (Coil & Tube)
0.2mm Thk To 100mm Thk (Sheet & Foil), 5mm To 150mm (Round Bar)



9) BERYLLIUM COPPER ALLOY

- Grade :- C17200 / C17500 & Other Grades by Import
- From :- Pipe, Tubes, Sheet, Foil, Shim, Round Bar, Flat Bar, Wire Coil
- Thickness :- 0.05mm Thk / Dia To 100mmThk / Dia



10) TITANIUM ALLOY

- Grade :- Gr.1 / Gr.2 / Gr.5 / Gr.9 / Ti6Al4v Etc.
- From :- Pipes, Tubes, Foil, Sheet, Circle, Round Bar, Wire / Wire Coil, Flat Bar & Fittings
- Size :- 6mm OD To 114mm OD (For Pipes & Tubes), 0.3mm Dia To 200mm Dia
(For Round Bar) 0.3mm Thk To 50mm Thk (For Sheet, Plate & Flat Bar)



11) HASTELLOY B / HASTELLOY C276 ALLOY

- From :- Pipes, Tubes, Sheet, Circle, Flat Bar, Wire / Wire Coil, Round Bar & Fittings
- Size :- ½” To 5” OD (For Pipes & Tubes), 0.3mm To 200mm Dia (For Round Bar)
1mm Thk To 20mm Thk (For Sheet, Plate & Flat Bar)



12) MONEL & INCONEL ALLOY

- Grade :- Monel - 400 / 500 / 800, Inconel - 600 / 625 / 800 / 718
- From :- Pipes, Tubes, Sheet, Circle, Flat Bar, Wire / Wire Coil, Round Bar & Fittings
- Size :- ½” To 5” OD (For Pipes & Tubes), 0.3mm To 200mm Dia (For Coil & Round Bar) 1mm Thk To 20mm Thk (For Sheet, Plate & Flat Bar)

